



**Government of India
Ministry of Earth Sciences
India Meteorological Department**



Press Release

Date: 27th June, 2025

Time of Issue: 1330 hours IST

**Subject: (i) Conditions are becoming favourable for further advance of Southwest monsoon over remaining parts of the country during next 2- 3 days.
(ii) Heavy to very heavy rainfall activity likely to continue over many parts of Northwest, central, east & northeast India during next 7 days, with isolated extremely heavy falls over Saurashtra & Kutch on 27th June, 2025.**

Southwest Monsoon (Annexure I):

- ❖ The Northern Limit of Monsoon passes through 27.0°N/68.5°E, 27.0°N/70.0°E, Jaisalmer, Bikaner, Jhunjhunu, Bharatpur, Rampur, Sonipat, Anup Nagar and 29.0°N/70.0°E.
- ❖ Conditions are becoming favourable for further advance of Southwest monsoon over remaining parts of the country during next 2- 3 days.

Realised weather during past 24 hours till 0830 hours IST of today, the 27th June, 2025 (Annexure II):

- ❖ **Heavy to very heavy rainfall with extremely heavy falls** recorded at isolated places over Assam.
- ❖ **Heavy to very heavy rainfall** recorded at some places over Kerala; at isolated places over Tamil Nadu, South Interior Karnataka, Madhya Maharashtra, Gujarat state, Himachal Pradesh, East Rajasthan, West Madhya Pradesh, Vidarbha, Odisha; **Heavy rainfall** at isolated places over Coastal Karnataka, Konkan, West Bengal, Jharkhand, West Rajasthan, Uttarakhand, Punjab, Haryana, East Madhya Pradesh, Chhattisgarh, Meghalaya and Manipur.
- ❖ **Thunderstorm accompanied with Squally/Gusty winds with speed 40-60 kmph** at isolated places over Tamil Nadu, Kerala & Mahe, Coastal Andhra Pradesh & Yanam, Rayalaseema, Telangana, Interior Karnataka, East Uttar Pradesh, West Madhya Pradesh, Vidarbha, Bihar.

For more details of realised weather, kindly refer [Annexure I](#),

i. Weather Systems, Forecast and Warnings (refer to Annexure III & IV):

- ❖ A cyclonic circulation lies over southwest Rajasthan and an east-west trough runs from this cyclonic circulation to Bangladesh across East Rajasthan, north Madhya Pradesh, north Jharkhand, Gangetic West Bengal extending upto middle tropospheric levels tilting southwest wards with height.
- ❖ Yesterday's low pressure area over northwest Bay of Bengal and adjoining north Odisha & West Bengal has become less marked and the associated cyclonic circulation has merged with above mentioned east-west trough.
- ❖ A fresh upper-air cyclonic circulation is likely to develop over north Bay of Bengal and adjoining coastal Bangladesh & West Bengal around 29th June, 2025. Under its influence a low-pressure area is likely to form over the same region during subsequent 24 hours. in lower tropospheric levels.
- ❖ Under the influence of these systems, the following weather is likely:

West India:

- ✓ **Extremely heavy rainfall (>20 cm/24 hours) likely at isolated places over Saurashtra on 27th June.**
- ✓ **Heavy to very heavy rainfall** at isolated places likely over Konkan & Goa, Ghat areas of Madhya Maharashtra, Gujarat state during next 7 days.
- ✓ Light/moderate rainfall at most/many places likely over the region during next 7 days.

Northwest India:

- ✓ Isolated **heavy rainfall** likely over Punjab, Haryana, Himachal Pradesh, Uttarakhand, East Rajasthan during 27th June-03rd July; West Rajasthan, Jammu-Kashmir during 27th-29th; Uttar Pradesh during 28th June-03rd July with **very**

heavy rainfall over Himachal Pradesh, Punjab on 29th; Haryana on 29th & 30th; Uttarakhand during 27th June-01st July, East Rajasthan on 27th and Uttar Pradesh during 29th June-02nd July.

- ✓ Light/moderate rainfall at most/many places accompanied with **thunderstorm, lightning & gusty winds speed reaching 30-40 kmph** likely over Northwest India during next 7 days.

East & Central India:

- ✓ Isolated **heavy rainfall** over Madhya Pradesh, Chhattisgarh, Odisha, Jharkhand, Bihar, West Bengal & Sikkim during 27th June-03rd July; Vidarbha on 27th & during 30th June-02nd July; Andaman & Nicobar Islands on 28th; with **very heavy rainfall** over Madhya Pradesh on 27th June & during 01st-03rd July; Vidarbha on 27th; Chhattisgarh on 01st & 02nd; Gangetic West Bengal on 29th & 30th; Odisha on 30th June & 01st July and Jharkhand on 29th June.
- ✓ Light/moderate rainfall at most/many places accompanied with **thunderstorm, lightning & gusty winds speed reaching 40-50 kmph** likely over Andaman & Nicobar Islands, Madhya Pradesh, Vidarbha, Chhattisgarh, Gangetic West Bengal, Bihar, Jharkhand, Odisha during next 7 days.

Northeast India:

- ✓ Light/moderate rainfall at most places accompanied with **thunderstorm, lightning and isolated heavy rainfall** likely to continue over Northeast India during next 7 days with **very heavy rainfall** over Arunachal Pradesh on 01st July; Nagaland on 27th June & 02nd July.

South Peninsular India:

- ✓ Isolated **heavy rainfall** likely over Tamil Nadu on 27th & 28th; Coastal Karnataka during 27th June-03rd July; South Interior Karnataka on 27th June & during 01st-03rd July, Telangana on 27th June; Kerala on 29th June & 03rd July with **very heavy rainfall** over Kerala on 27th & 28th June.
- ✓ **Strong surface winds** (speed reaching 40-60 kmph) very likely over Karnataka, Coastal Andhra Pradesh & Yanam, Rayalaseema, Telangana during 27th-30th June.
- ✓ Light/moderate rainfall at many/some places over Kerala & Mahe, Lakshadweep, Coastal Karnataka; isolated to scattered rainfall accompanied with isolated **thunderstorm, lightning** over Coastal Andhra Pradesh & Yanam, Telangana, Interior Karnataka during next 7 days.

Fishermen Warnings:

Arabian Sea:

- ❖ Fishermen are advised not to venture off Gujarat coast for day 1 & day 5 (27th June to 02nd July), entire Konkan coast for day 1 to day 3 (27th to 30th June), along and off north Konkan coast for day 4 to day 5 (30th June & 01st July); along and off Goa-Karnataka, Kerala coasts coast for day 1 & day 2 (27th & 28th June); Fishermen are advised not to venture along and off the Somalia coast and adjoining sea areas, Oman and adjoining Yemen coast & adjoining sea areas, central & adjoining north, south Arabian Sea for day 1 to day 5 (27th June to 01st July); most parts of north Arabian Sea for day 3 to day 5 (29th June to 02nd July); over Lakshadweep area for day 1 & day 2 (27th & 28th June).

Bay of Bengal:

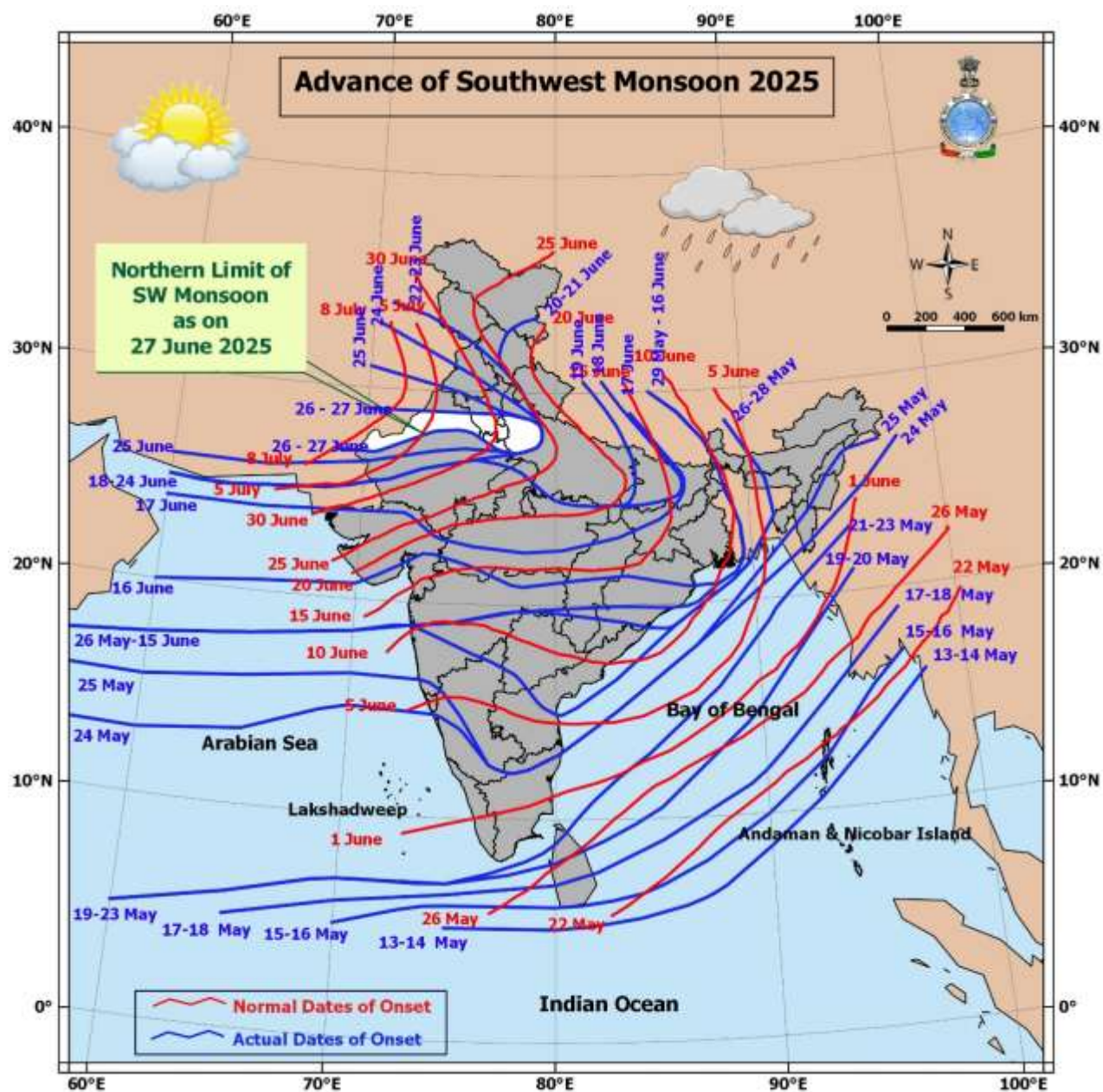
- ❖ Fishermen are advised not to venture many parts of westcentral Bay of Bengal and adjoining eastcentral, southwest Bay of Bengal along and off north Andhra Pradesh for day 1 to day 3 (27th to 30th June), north Andhra Pradesh and adjoining Odisha coast for day 2 (28th June), off north Tamil Nadu coast for day 1 (27th June); along and off Odisha and West Bengal coasts for day 3 to day 5 (30th June to 02nd July); most parts of central Bay of Bengal, north Bay of Bengal; few parts of southeast Bay of Bengal for day 2 to day 5 (28th June to 02nd July).
- ❖ Fishermen are advised not to venture over the Gulf of Mannar for day 2 & day 3 (28th & 29th June)
- ❖ Fishermen are advised not to venture over the Andaman Sea for day 2 to day 4 (28th June to 01st July).
- ❖ Total suspension of fishing operations is suggested over above mentioned areas and dates.

ii. Weather conditions and forecast over Delhi/NCR during 27th June to 30th June, 2025 (Annexure V)

For more details, kindly refer National Weather Bulletin:

https://mausam.imd.gov.in/responsive/all_india_forecast_bulletin.php

For District wise warnings refer: <https://mausam.imd.gov.in/responsive/districtWiseWarningGIS.php>



Rainfall recorded (in cm) during past 24 hours till 0830 hours IST of today, the 27th June:

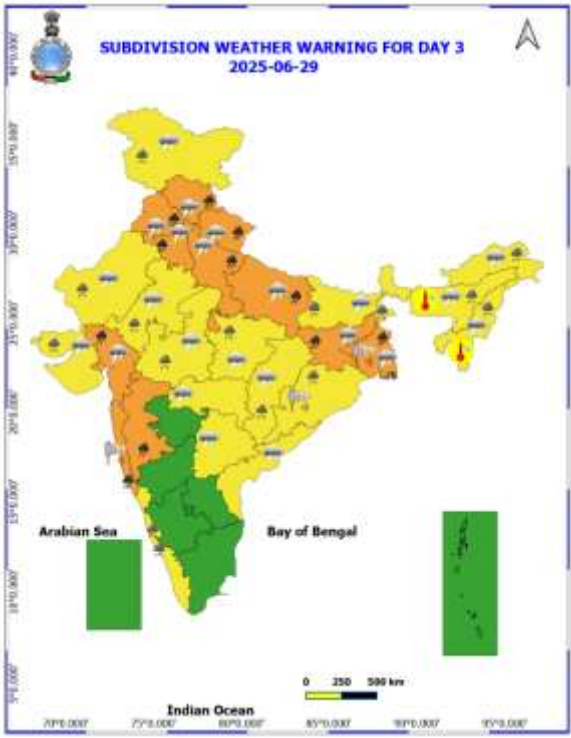
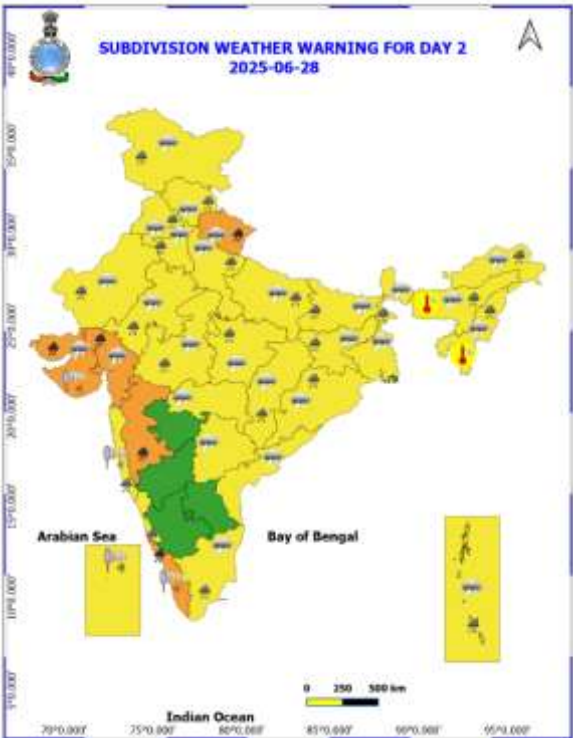
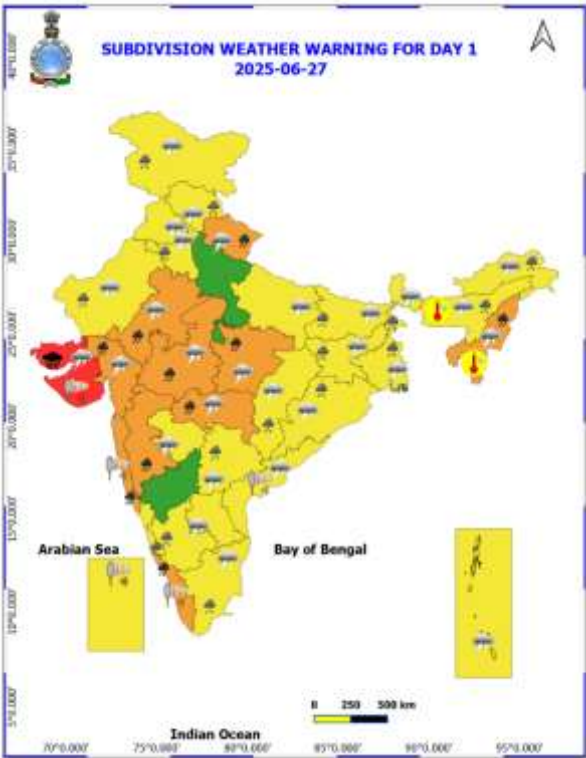
- ❖ **Assam & Meghalaya:** Khowang (dist Dibrugarh) 24;
- ❖ **South Interior Karnataka:** Agumbe Emo (dist Shivamogga) 17; Kammardi (dist Chikkamagaluru), Kottigehara (dist Chikkamagaluru) 8 Each; Kalasa (dist Chikkamagaluru), Napoklu (dist Kodagu) 7 Each;
- ❖ **Saurashtra & Kutch:** Malia (dist Junagadh) 16; Mangrol(j) (dist Junagadh), Talala (dist Gir Somnath) 15 Each; Keshod (dist Junagadh) 14; Visavadar (dist Junagadh), Sutrapada (dist Gir Somnath) 13 Each; Ranavav (dist Porbandar), Kalyanpur (dist Devbhoomi Dwarka) 8 Each; Kutiana (dist Porbandar), Vadia (dist Amreli) 7 Each;
- ❖ **Gujarat Region:** Vadali (dist Sabarkantha) 15; Dharoi Colony (dist Mehsana), Idar (dist Sabarkantha) 11 Each; Khedbrahma (dist Sabarkantha), Vadgam (dist Banaskantha), Khergam (dist Navsari) 10 Each; Chikhli (dist Navsari), Gandevi (dist Navsari) 9 Each; Navsari (dist Navsari), Danta (dist Banaskantha) 8 Each; Quant (dist Chhota Udepur), Bhiloda (dist Aravalli), Pardi (dist Valsad), Patan AWS (dist Patan), Daman (dist Daman), Umergam (dist Valsad), Mahesana (dist Mehsana) 7 Each;
- ❖ **Odisha:** Balikuda (dist Jagatsinghpur) 14; Kakatpur (dist Puri) 11; Bolagarh (dist Khurda) 10; Betanati (dist Mayurbhanj), Nayagarh (dist Nayagarh), Kaptipada (dist Mayurbhanj) 8 Each; Nimpura (dist Puri), Rajnagar (dist Kendrapara) 7 Each;
- ❖ **Himachal Pradesh:** Pandoh (dist Mandi) 14; Jogindarnagar (dist Mandi) 7;
- ❖ **West Madhya Pradesh:** Khirkiya-arg (dist Harda) 13; Udainagar (dist Dewas), Timarni (dist Harda), Meghnagar (dist Jhabua) 12 Each; Badnawar (dist Dhar), Mandsaur-aws (dist Mandsaur), Narsingarh (dist Rajgarh) 11 Each; Hatpiplaya (dist Dewas) 10; Petlawad (dist Jhabua), Jaora (dist Ratlam) 9 Each; Harda (dist Harda), Begumganj (dist Raisen), Nasrullahganj (dist Sehore), Rama (dist Jhabua) 8 Each; Indore (dist Indore), Thandla (dist Jhabua), Barwaha (dist Khargone), Biaora (dist Rajgarh), Badnagar (dist Ujjain), Maksudangarh (dist Guna) 7 Each;
- ❖ **Vidarbha:** Mangrulpir (dist Washim), Mehkar (dist Buldhana) 13 Each; Lonar (dist Buldhana) 10; Malegaon (dist Washim) 8; Barshitakli (dist Akola), Patur (dist Akola), Arvi (dist Wardha), Balapur (dist Akola) 7 Each;
- ❖ **East Rajasthan:** Sajjangarh SR (dist Banswara) 13; Sallopat SR (dist Banswara), Veja SR (dist Dungarpur), Bassi (dist Jaipur) 11 Each; Sagwara (dist Dungarpur) 10; Atru SR (dist Baran) 9; Dhambola (dist Dungarpur), Dausa (dist Dausa) 8 Each; Jamwaramgarh SR (dist Jaipur), Bagidora SR (dist Banswara) 7 Each;
- ❖ **Kerala & Mahe:** Kayamkulam ARG (dist Alapuzha), Ernakulam South (dist Ernakulam) 12 Each; Tellichery (dist Cannur), Mavelikara (dist Alapuzha), Haripad (dist Alapuzha) 11 Each; Kumarakam (dist Kottayam), Cherthala (dist Alapuzha), Aluva AWS (dist Ernakulam), Alwaye PWD (dist Ernakulam) 10 Each; Chalakudi (dist Thrissur), Mancompu (dist Alapuzha), Piravam (dist Ernakulam), Vadakkancherry (dist Thrissur), Perumpavur (dist Ernakulam), Karipur Ap. (dist Malappuram), Kalamassery AWS (dist Ernakulam), Munakkal AWS (dist Thrissur) 9 Each; Manjeri (dist Malappuram), Vadakara (dist Kozhikode), Kollam Rly (dist Kollam), Chemberi AWS (dist Cannur), Mannarkkad AWS (dist Palakkad), Ams Kannur (dist Cannur), Kozhikode (dist Kozhikode) 8 Each; Vyttili (dist Wynad), Enamakkal (dist Thrissur), Kochi C.i.a.l. (dist Ernakulam), Varkala (dist Thiruvananthapuram), Kunnamkulam (dist Thrissur), Kannur Airport AWS (dist Cannur), Choondy AWS (dist Ernakulam), Kunnamangalam AWS (dist Kozhikode), Kunnathanam AWS (dist Pathanamthitta), Athirappalli AWS (dist Thrissur), Kalpetta AWS (dist Wynad), Manantoddy (dist Wynad) 7 Each;
- ❖ **Tamil Nadu, Puducherry & Karaikal:** Chinnakalar (dist Coimbatore) 12; Worth Estate Cher (dist Nilgiris) 11; Kozhiporvilai (dist Kanyakumari) 10; Mylaudy (dist Kanyakumari), Sholayar (dist Coimbatore), Valparai Pap (dist Coimbatore) 9 Each; Valparai Taluk Office (dist Coimbatore), Avalanche (dist Nilgiris), Cincona (dist Coimbatore), Mambzhathuraiyaru (dist Kanyakumari), Anaikedanku (dist Kanyakumari) 8 Each; Nagercoil (dist Kanyakumari), Thuckalay (dist Kanyakumari), Devala (dist Nilgiris), Valparai PTO (dist Coimbatore), Barwood (dist Nilgiris) 7 Each;
- ❖ **Konkan & Goa:** Jawhar (dist Palghar) 11; Matheran (dist Raigad) 8; Mokheda - Fmo (dist Palghar), Karjat ARG (dist Raigad) 7 Each;
- ❖ **East Madhya Pradesh:** Rahatgarh (dist Sagar) 10; Shahpura (dist Jabalpur) 9; Mohkheda (dist Chindwara) 8; Kusmi (dist Sidhi), Umreth (dist Chindwara), Bilaspur (dist Umaria) 7 Each;
- ❖ **Chhattisgarh:** Pratappur (dist Surajpur) 9; Darri (dist Korba) 7;
- ❖ **Coastal Karnataka:** Castle Rock (dist Uttara Kannada) 9; Sulya (dist Dakshina Kannada) 8;
- ❖ **Haryana** Fatehabad (dist Fatehabad) 8;
- ❖ **Uttarakhand:** Loharkhet (dist Bageshwar) 8;
- ❖ **Madhya Maharashtra:** Gaganbawada (dist Kolhapur) 8; Radhanagari (dist Kolhapur) 7;
- ❖ **Jharkhand:** Gobindpur Dvc (dist Dhanbad) 7;
- ❖ **West Rajasthan:** Santhore (dist Jalore), Suratgarh (dist Sri Ganganagar) 7 Each

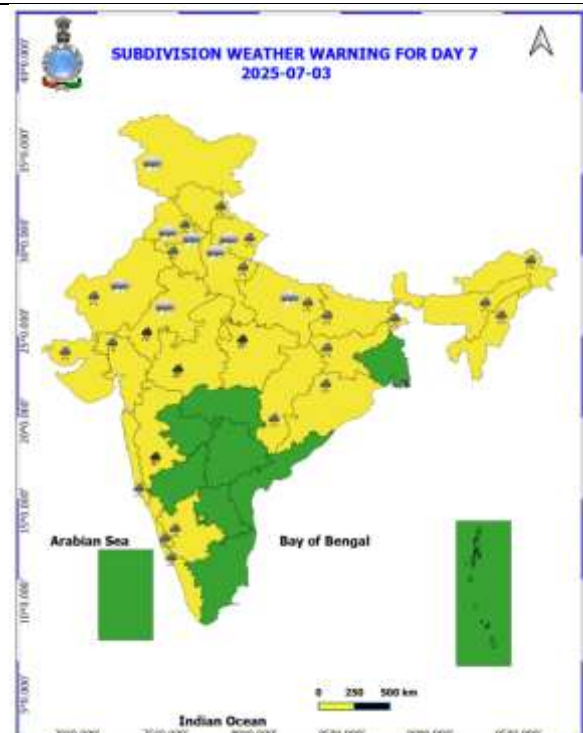
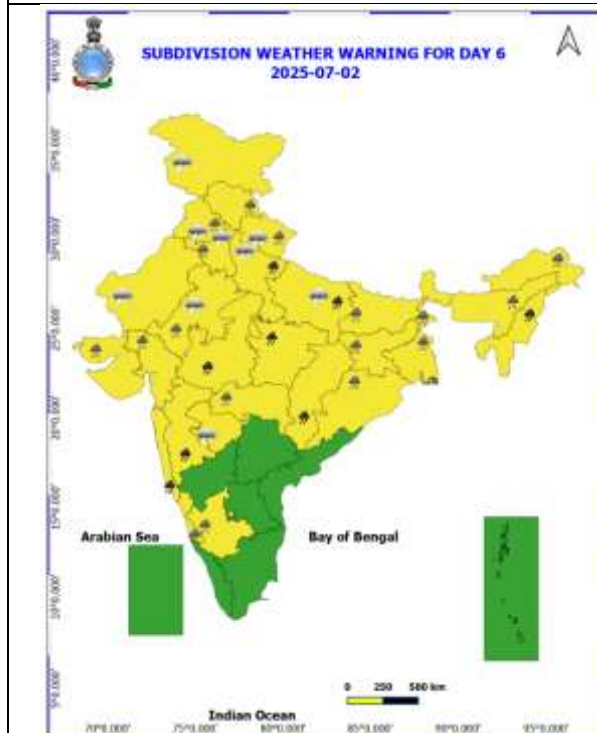
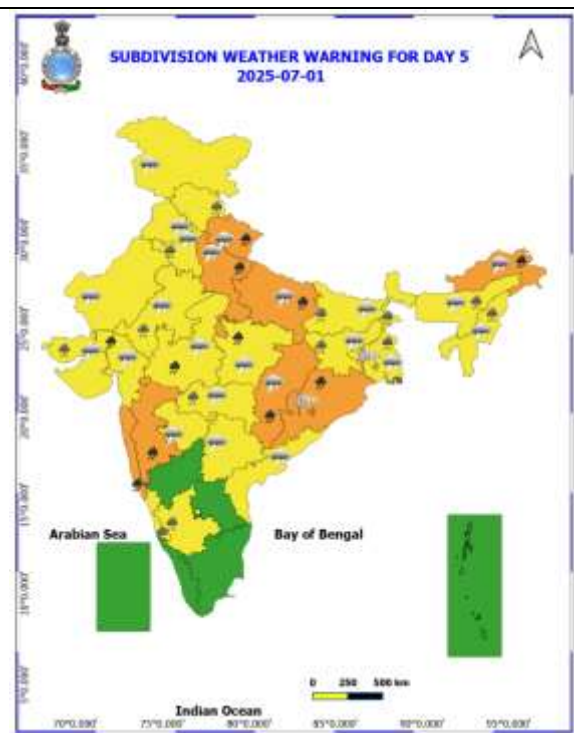
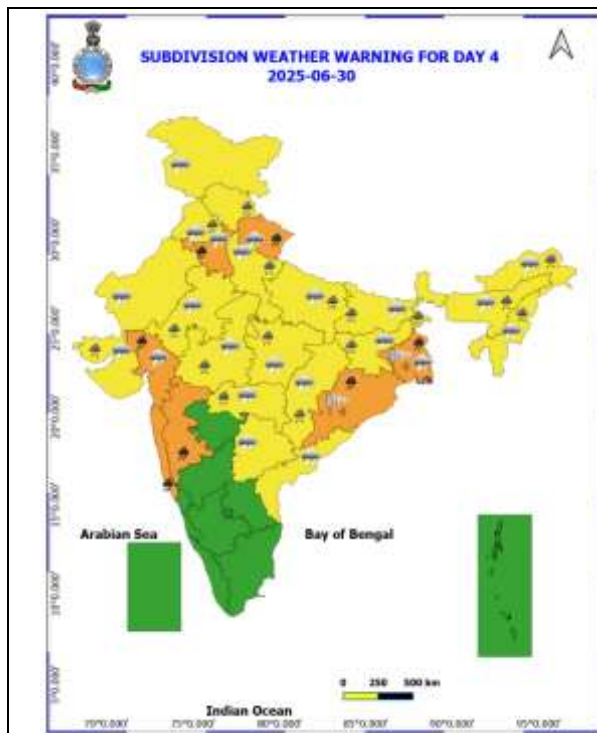
Realised Gusty Winds (kmph) During Past 24hours ending at 0830 hrs IST of today the 27th June:

- ❖ Saurashtra & Kutch: Bhuj AWS (56);
- ❖ Punjab: Faridkot (52), Sangrur (41);
- ❖ Madhya Maharashtra: Kurvande (Pune) (52), Karad (Satara) (50);
- ❖ Bihar: Aurangabad_KVK (52), East Champaran_KVK (48), Sukhet (43), IIT Patna (41), Pusa (39), Saraiya_KVK (39), Dumaraon (37), Sipaya (37), Sheikpura (37), Madhepura (35), Patna (33), Araria (33), Khagaria (33), Rajgir (31), Muzaffarpur (31), Ziradei (31)
- ❖ Gangetic West Bengal: Dumdum (46), Howrah (41), Digha (39), Gangasagar (39), Ramkrishna_Mission_College (S24 PGNS)-39; Jagatballavpur (35), Nimpith (33), Murshidabad (31);
- ❖ East Uttar Pradesh: Mirzapur (46), Raebareilly & Fatehpur (39);
- ❖ West Madhya Pradesh: Indore (46), Gwalior (41), Shivpuri (35), Harda (31), Agar (30), Sehore (30);
- ❖ Vidarbha: Wardha 41

Table-1								
7 Days Rainfall Forecast								
S.No.	Subdivision	27- Jun	28- Jun	29- Jun	30- Jun	1- Jul	2- Jul	3- Jul
		Day 1	Day 2	Day 3	Day 4	Day 5	Day 6	Day 7
1	ANDAMAN & NICOBAR ISLANDS	FWS	WS	WS	FWS	FWS	FWS	FWS
2	ARUNACHAL PRADESH	SCT	FWS	FWS	FWS	FWS	FWS	FWS
3	ASSAM & MEHGHALAYA	SCT	SCT	FWS	FWS	FWS	FWS	FWS
4	NAGALAND, MANIPUR, MIZORAM AND TRIPURA	FWS	FWS	FWS	WS	WS	WS	WS
5	SUB HIMALAYAN WEST BENGAL & SIKKIM	FWS	WS	WS	WS	FWS	WS	WS
6	GANGETIC WEST BENGAL	WS	WS	WS	WS	WS	FWS	FWS
7	ODISHA	FWS	FWS	FWS	WS	WS	FWS	FWS
8	JHARKHAND	WS	WS	WS	WS	WS	WS	WS
9	BIHAR	FWS	FWS	FWS	FWS	FWS	FWS	FWS
10	EAST UTTAR PRADESH	SCT	FWS	FWS	FWS	FWS	FWS	FWS
11	WEST UTTAR PRADESH	ISOL	SCT	FWS	FWS	FWS	FWS	FWS
12	UTTARAKHAND	FWS	FWS	WS	WS	WS	FWS	FWS
13	HARYANA, CHANDIGARH & DELHI	SCT	FWS	WS	WS	WS	FWS	SCT
14	PUNJAB	SCT	SCT	WS	WS	FWS	SCT	SCT
15	HIMACHAL PRADESH	WS	FWS	WS	WS	FWS	FWS	FWS
16	JAMMU AND KASHMIR AND LADAKH	FWS	SCT	SCT	SCT	SCT	SCT	SCT
17	WEST RAJASTHAN	FWS	FWS	SCT	SCT	ISOL	ISOL	ISOL
18	EAST RAJASTHAN	FWS	FWS	FWS	FWS	FWS	SCT	FWS
19	WEST MADHYA PRADESH	WS	FWS	FWS	FWS	WS	WS	WS
20	EAST MADHYA PRADESH	WS	FWS	FWS	WS	WS	WS	WS
21	GUJRAT REGION	WS	WS	WS	WS	WS	WS	WS
22	SAURASHTRA & KUTCH	WS	WS	WS	FWS	FWS	FWS	WS
23	KONKAN & GOA	WS	WS	WS	WS	WS	WS	WS
24	MADHYA MAHARASHTRA	SCT	SCT	SCT	SCT	SCT	SCT	FWS
25	MARATHWADA	ISOL	ISOL	ISOL	ISOL	ISOL	SCT	ISOL
26	VIDARBHA	FWS	SCT	SCT	SCT	FWS	WS	FWS
27	CHHATTISGARH	FWS	FWS	SCT	FWS	FWS	FWS	FWS
28	COASTAL ANDHRA PRADESH	FWS	SCT	ISOL	ISOL	SCT	FWS	FWS
29	TELANGANA	SCT	ISOL	ISOL	ISOL	SCT	SCT	SCT
30	RAYALASEEMA	ISOL	ISOL	ISOL	ISOL	ISOL	ISOL	SCT
31	TAMILNADU & PUDUCHERRY	ISOL	SCT	ISOL	ISOL	ISOL	ISOL	ISOL
32	COSTAL KARNATAKA	WS	WS	WS	WS	WS	WS	WS
33	NORTH INTERIOR KARNATAKA	SCT	SCT	ISOL	ISOL	SCT	SCT	SCT
34	SOUTH INTERIOR KARNATAKA	SCT	SCT	ISOL	ISOL	SCT	SCT	SCT
35	KERALA AND MAHE	WS	WS	FWS	SCT	SCT	FWS	WS
36	LAKSHADWEEP	WS	WS	FWS	SCT	SCT	FWS	WS

- As the lead period increases forecast accuracy decreases.





- Action may be taken based on ORANGE AND REDCOLOUR warnings.
- Vulnerable regions likely urban and hilly areas action may be initiated for heavy rainfall warning.
- As the lead period increases forecast accuracy decreases.

Detailed districtwise Multi Hazard weather warning for next five days available at
<https://mausam.imd.gov.in/responsive/districtWiseWarningGIS.php>

Weather forecast over Delhi/NCR during 27th to 30th June 2025**Past Weather:**

There has been rise in the minimum up to 1°C and rise in maximum temperature up to 3 - 4°C over Delhi/NCR during the past 24 hours. The maximum and minimum temperatures over Delhi were around 37 to 38 °C and 26 to 29°C, respectively. The minimum and maximum temperatures were near normal. Partly cloudy sky conditions with predominant surface wind from the east/southeast direction with wind speeds up to 18 kmph prevailed during the past 24 hours. Partly cloudy sky conditions with wind speed less than 16 kmph from the southeast direction prevailed over the region in the forenoon today.

Weather Forecast:

27.06.2025: Partly cloudy sky. Very light to light rain accompanied with thunderstorm/lightning towards afternoon/evening. The maximum temperatures over Delhi are likely to be in the range of 36 to 38°C. The maximum temperature will be near normal. The predominant surface wind will likely be from the southeast direction with a wind speed of less than 15 kmph in the afternoon. The wind speed will gradually decrease becoming 08-10 kmph from the southeast direction during evening and night.

28.06.2025: Generally cloudy sky. Light to moderate rain accompanied with thunderstorm/lightning towards evening/night. The maximum and minimum temperatures over Delhi are likely to be in the range of 35 to 37°C and 26 to 28°C respectively. The minimum temperature will be near normal and the maximum temperature will be below normal up to 1 to 2 °C. The predominant surface wind will likely be from the southeast direction with a wind speed of less than 10 kmph during the morning hours. The wind speed will gradually increase becoming 10-15 kmph from the southeast direction in the afternoon. It will increase becoming less than 18 kmph from the southeast direction during evening and night.

29.06.2025: Generally cloudy sky. Light to moderate rain accompanied with thunderstorm/lightning. The maximum and minimum temperatures over Delhi are likely to be in the range of 32 to 34°C and 25 to 27°C, respectively. The minimum temperature will be below normal up to 1 to 2°C, and the maximum temperature will be below normal up to 3 to 5°C. The predominant surface wind will likely be from the west direction with a wind speed of less than 10 kmph during the morning hours. The wind speed will gradually increase becoming less than 15 kmph from the southwest direction in the afternoon. It will increase to less than 20 kmph from the southwest direction during the evening and night.

30.06.2025: Generally cloudy sky. Light to moderate rain accompanied with thunderstorm/lightning. The maximum and minimum temperatures over Delhi are likely to be in the range of 32 to 34°C and 25 to 27°C, respectively. The minimum temperature will be below normal up to 1 to 2 °C, and the maximum temperature will be below normal up to 3 to 5°C. The predominant surface wind will likely be from the west direction with a wind speed of less than 15 kmph during the morning hours. The wind speed will gradually decrease becoming less than 10 kmph from the west direction in the afternoon. It will increase to less than 12 kmph from the south direction during the evening and night.

Impact expected and Action Suggested due to thunderstorm with lightning/gusty winds:

- Be cautious and take precautionary measures, though there is the likelihood of thunderstorm/lightning.
- Breaking of tree branches, uprooting of large avenue trees, Large dead limbs blown from trees, Damage to standing crops, Minor to major damage to power and communication lines due to breaking of branches, Partial damage to vulnerable structures due to strong winds, Loose objects may fly.
- People are advised to keep a watch on the weather for worsening conditions and be ready to move to safer places accordingly, stay indoors, close windows & doors and avoid travel if possible, take safe shelters; do not take shelter under trees, do not lie on concrete floors and do not lean against concrete walls, unplug electrical/ electronic appliances, immediately get out of water bodies, keep away from all the objects that conduct electricity.

Impact & Action Suggested due to extremely heavy falls/ very heavy rainfall:

- ✓ **Extremely heavy rainfall (>20 cm/24 hours) likely at isolated places over Saurashtra on 27th June.**
- ✓ **Very heavy rainfall** at isolated places likely over Konkan & Goa, Ghat areas of Madhya Maharashtra, Gujarat state during next 7 days; Himachal Pradesh, Punjab on 29th; Haryana on 29th & 30th; Uttarakhand during 27th June-01st July, East Rajasthan, Vidarbha on 27th and Uttar Pradesh during 29th June-02nd July; Madhya Pradesh on 27th June & during 01st-03rd July; Chhattisgarh on 01st & 02nd; Gangetic West Bengal on 29th & 30th; Odisha on 30th June & 01st July and Jharkhand on 29th June; Kerala on 27th & 28th June.

Impact Expected

- Localized Flooding of roads, water logging in low lying areas and closure of underpasses mainly in urban areas of the above region.
- Occasional reduction in visibility due to heavy rainfall.
- Disruption of traffic in major cities due to water logging in roads leading to increased travel time.
- Minor damage to kutcha roads.
- Possibilities of damage to vulnerable structure.
- Localized Landslides/Mudslides/landslips/mudslips/landsinks/mudsinks.
- Damage to horticulture and standing crops in some areas due to inundation.
- It may lead to riverine flooding in some river catchments (for riverine flooding please visit Web page of CWC)

Action Suggested

- Check for traffic congestion on your route before leaving for your destination.
- Follow any traffic advisories that are issued in this regard.
- Avoid going to areas that face the water logging problems often.
- Avoid staying in vulnerable structure.

**Agromet advisories for likely impact of Heavy / Heavy to Very Heavy / Extremely Heavy Rainfall
(Based on the IBF and advisories issued by different AMFUs)**

- In **Gujarat** postpone sowing of rice nurseries, groundnut, pearl millet, sorghum, pigeon pea, green gram, and black gram. Ensure proper drainage facilities in already sown rice nurseries, sugarcane fields, banana and mango plantations to prevent waterlogging. Provide support to sugarcane and banana to prevent lodging. In **Saurashtra & Kutch**, Drain out excess rain water from vegetable nurseries and horticultural plantations. Undertake propping in sugarcane with strong bamboo or tie the leaves together in a clump to protect against wind and heavy rain.
- In **Konkan & Goa** make arrangements to drain out excess water from rice nurseries, fields of finger millet, groundnut and orchards to prevent waterlogging. In **ghat areas of Madhya Maharashtra**, drain out excess water from rice nurseries, vegetables and orchards to prevent waterlogging. In **Vidarbha**, keep already harvested produce at safer places and provide mechanical support to newly planted orchards and vegetables to prevent them from lodging.
- In **West Madhya Pradesh**, postpone harvesting of maize. Postpone sowing of pearl millet, soybean, pigeon pea and paddy nurseries. Make necessary arrangements to drain out excess water from vegetables and orchards to avoid waterlogging. In **East Madhya Pradesh**, harvest matured maize, green gram and black gram during favourable weather and store in safe places. Ensure proper drainage in already sown / transplanted fields.
- In **Chhattisgarh**, ensure proper drainage in rice nurseries.
- In **Sub-Montane and Low Hills Sub-Tropical Zone of Himachal Pradesh**, provide drainage in maize and vegetable fields. Strengthen the support for creepers and tall vegetable crops (tomato, capsicum etc.). In **Mid Hills Sub-Humid Zone of Himachal Pradesh**, harvest matured fruits of plum, pear and stonefruit to minimize losses due to heavy rains. Make proper drainage channels in the fields of maize, apple, pear, pomegranate, kiwi, cucumber and tomato to avoid waterlogging. Provide support to cucumber vines and tomato plants to prevent lodging.
- In **Uttarakhand**, make proper drainage channels in rice nurseries, pigeon pea, groundnut, maize, soybean, barnyard millet and finger millet to avoid waterlogging. In **Bhabar and Tarai Zone of Uttarakhand**, harvest matured spring maize crop and vegetables (pumpkin, tomato, okra, chilli, French bean etc.) and store in safe place during clear weather.
- In **East Rajasthan**, harvest the matured vegetables such as okra and cucurbits and store them in safe place. Make arrangement for draining out excess water from the fields of groundnut and green gram.
- In **Jharkhand**, make necessary arrangements to drain out excess water from already sown maize fields, rice and vegetable nurseries.
- In **Odisha**, ensure proper drainage from already sown rice nurseries, fields of maize and vegetables to prevent waterlogging. Cover rice and vegetable nurseries with plastic sheets to prevent washing away of seeds.
- In **South Interior Karnataka**, cover young seedlings of rice with plastic sheets or agro-shade nets to protect them from heavy rains. Provide adequate drainage to remove excess water from rice nurseries, coffee, cardamom, coconut and arecanut plantations to prevent water logging. Provide support to sugarcane and banana to prevent lodging.
- In ghat regions of **Tamilnadu**, provide adequate drainage in rice nurseries, sorghum, maize, pulses, groundnut, sugarcane, orchards and vegetable crops.
- In **Kerala**, ensure proper drainage facilities in rice nurseries, transplanted rice fields, coconut and banana plantations to prevent water logging. Undertake propping in banana to protect the plants from heavy rains.

Livestock / Fishery

- Keep the animals inside the shed during heavy rainfall and provide them balanced feed.
- Store feed and fodder in a safe place to prevent spoilage.
- Construct an outlet with proper netting around the ponds to drain out excess water, thereby preventing fish from escaping in case of overflow.

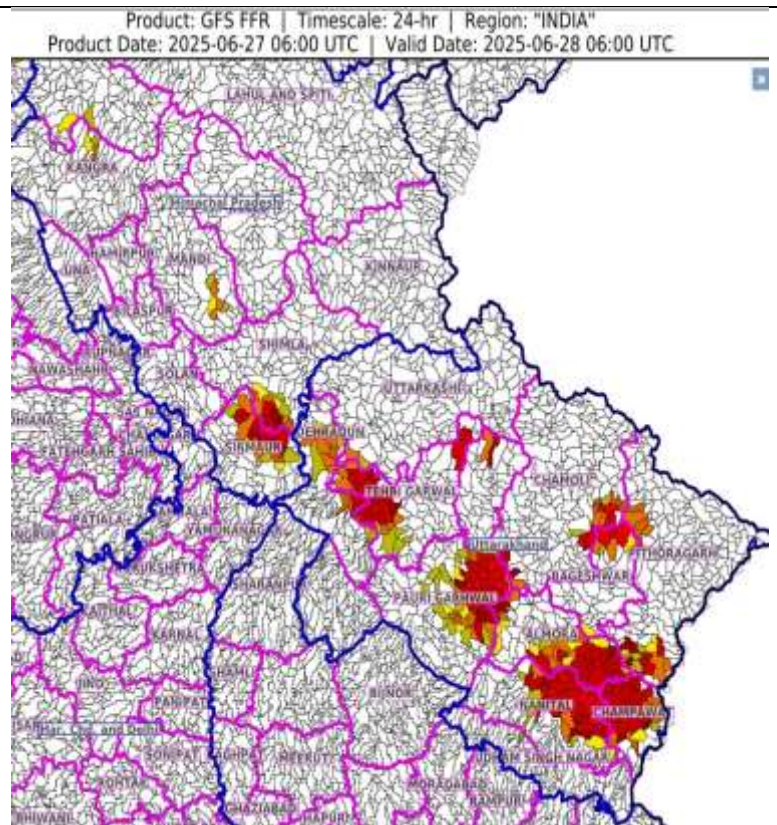
Flash flood guidance:

24 hours Outlook for the Flash Flood Risk (FFR) till 1130 IST of 28-06-2025 :

Low to Moderate flash flood risk likely over few watersheds & neighbourhoods of following Met Sub-divisions during next 24 hours.

Himachal Pradesh - Shimla and Sirmaur districts.
Uttarakhand - Almora, Bageshwar, Chamoli, Champawat, Dehradun, Nanital, Pauri Garhwal, Pithoragarh, Rudrapur, Tehri Garwal and Uttarkashi districts.

Surface runoff/ Inundation may occur at some fully saturated soils & low-lying areas over Area of Concern (AoC) as shown in map due to expected rainfall occurrence in next 24 hours.



Legends & abbreviations:

- ❖ **Heavy Rain:**64.5-115.5mm; **Very Heavy Rain:**115.6-204.4mm; **Extremely Heavy Rain:** >204.4mm.
- ❖ **Obsy:** Observatory; Automatic Weather Station; **ARG:** Automatic Rain Gauge; **dist:** District; **NH:** National Highway; **KVK:** Krishi Vigyan Kendra; **DVC:** Damodar Valley Corporation; **PTO:** Part Time Office, **Aero:** Aerodrome, **IAF:** Indian Air Force.
- ❖ **Region wise classification of meteorological Sub-Divisions:**
 - **Northwest India:** Western Himalayan Region (Jammu-Kashmir-Ladakh-Gilgit-Baltistan-Muzaffarabad, Himachal Pradesh and Uttarakhand); Punjab, Haryana-Chandigarh-Delhi; West Uttar Pradesh, East Uttar Pradesh, West Rajasthan and East Rajasthan.
 - **Central India:** West Madhya Pradesh, East Madhya Pradesh, Vidarbha and Chhattisgarh.
 - **East India:** Bihar, Jharkhand, Sub-Himalayan West Bengal & Sikkim; Gangetic West Bengal, Odisha and Andaman & Nicobar Islands.
 - **Northeast India:** Arunachal Pradesh, Assam & Meghalaya and Nagaland, Manipur, Mizoram & Tripura.
 - **West India:** Gujarat Region, Saurashtra & Kutch, Konkan & Goa, Madhya Maharashtra and Marathawada.
 - **South India:** Coastal Andhra Pradesh & Yanam, Telangana, Rayalaseema, Coastal Karnataka, North Interior Karnataka, South Interior Karnataka, Kerala & Mahe, Tamil Nadu, Puducherry & Karaikal and Lakshadweep.

LEGENDS

1. अंडमान और निकोबार द्वीपसमूह

2. अरुणाचल प्रदेश

3. असम और मेघालय

4. नागालैंड, मणिपुर, मिजोरम और त्रिपुरा

5. उप-हिमालयी पश्चिम बंगाल और सिक्किम

6. गंगीय पश्चिम बंगाल

7. ओडिशा

8. झारखंड

9. बिहार

10. पूर्वी उत्तर प्रदेश

11. पश्चिम उत्तर प्रदेश

12. उत्तराखंड

13. हरियाणा, चंडीगढ़ और दिल्ली

14. पंजाब

15. हिमाचल प्रदेश

16. जम्मू और कश्मीर और लद्दाख

17. पश्चिम राजस्थान

18. पूर्वी राजस्थान

19. पश्चिम मध्य प्रदेश

20. पूर्वी मध्य प्रदेश

21. गुजरात

22. सौराष्ट्र

23. कोंकण और गोवा

24. मध्य महाराष्ट्र

25. मराठवाड़ा

26. विदर्भ

27. छत्तीसगढ़

28. तटीय आंध्र प्रदेश और यनम

29. तेलंगाना

30. रायलसीमा

31. तमिलनाडु, पुडुचेरी और कराईकल

32. तटीय कर्नाटक

33. आंतरिक उत्तरी कर्नाटक

34. आंतरिक दक्षिणी कर्नाटक

35. केरल और माहे

36. लक्षद्वीप



1. Andaman & Nicobar Islands

2. Arunachal Pradesh

3. Assam & Meghalaya

4. Nagaland, Manipur, Mizoram & Tripura

5. Sub-Himalayan West Bengal & Sikkim

6. Gangetic West Bengal

7. Odisha

8. Jharkhand

9. Bihar

10. East Uttar Pradesh

11. West Uttar Pradesh

12. Uttarakhand

13. Haryana, Chandigarh & Delhi

14. Punjab

15. Himachal Pradesh

16. Jammu & Kashmir and Ladakh

17. West Rajasthan

18. East Rajasthan

19. West Madhya Pradesh

20. East Madhya Pradesh

21. Gujarat

22. Saurashtra

23. Konkan & Goa

24. Madhya Maharashtra

25. Marathwada

26. Vidarbha

27. Chhattisgarh

28. Coastal Andhra Pradesh & Yanam

29. Telangana

30. Rayalaseema

31. Tamilnadu, Puducherry & Karaikal

32. Coastal Karnataka

33. North Interior Karnataka

34. South Interior Karnataka

35. Kerala & Mahe

36. Lakshadweep

SPATIAL DISTRIBUTION (% of Stations reporting)

% Stations	Category	% Stations	Category
76-100	Widespread (WS/Most Places)	26-50	Scattered (SCT/A Few Places)
51-75	Fairly Widespread (FWS/Many Places)	1-25	Isolated (ISOL)



Fog



Heavy Snow



Cold Wave



Heavy Rain



Dust Storm



Cold Day



Very Heavy Rain



Heat Wave



Ground Frost



Extremely Heavy Rain



Warm Night



Thunder & Lightning



Hot Day



Hailstorm



Hot & Humid



Dust Raising Winds



Strong Surface Winds

COLOUR CODED WARNING

No Warning (No Action)

Watch (Be Aware)

Alert (Be Prepared To Take Action)

Warning (Take Action)

Probabilistic Forecast

Terms	Probability of Occurrence (%)
Unlikely	< 25
Likely	25 - 50
Very Likely	50 - 75
Most Likely	> 75

* Red colour warning does not mean "Red Alert", Red colour warning means "Take Action".

Forecast and Warning for any day is valid from 0830 hours IST of day till 0830 hours IST of next day.

For more details, kindly visit <https://mausam.imd.gov.in> or contact: 011-2434-4599

(Service to the Nation since 1875)

DEFINITION/CRITERIA

Rain/ Snow *

Heavy: 64.5 to 115.5 mm/cm *
Very Heavy: 115.6 to 204.4 mm/cm *
Extremely Heavy: > 204.4 mm/cm *

Heat Wave

When maximum temperature of a station reaches $\geq 40^{\circ}\text{C}$ for plains and $\geq 30^{\circ}\text{C}$ for hilly regions

(a) Based on Departure from normal

Heat Wave: Maximum Temperature Departure from normal 4.5°C to 6.4°C .

Severe Heat Wave: Maximum Temperature Departure from normal $\geq 6.5^{\circ}\text{C}$

(b). Based on Actual maximum temperature

Heat Wave: When actual maximum temperature $\geq 45^{\circ}\text{C}$.

Severe Heat Wave: When actual maximum temperature $\geq 47^{\circ}\text{C}$.

(c). Criteria for heat wave for coastal stations

When maximum temperature departure is $> 4.5^{\circ}\text{C}$ from normal. Heat Wave may be described provided maximum temperature $\geq 37^{\circ}\text{C}$.

Warm Night

When maximum temperature remains 40°C

Warm Night: When minimum temperature departure 4.5°C to 6.4°C .

Severe Warm Night: When minimum temperature departure $> 6.4^{\circ}\text{C}$.

Cold Wave

When minimum temperature of a station $\leq 10^{\circ}\text{C}$ for plains and $\leq 0^{\circ}\text{C}$ for hilly regions.

(a). Based on departure

Cold Wave: Minimum Temperature Departure from normal -4.5°C to -6.4°C .

Severe Cold Wave: Minimum Temperature Departure from normal $\leq -6.5^{\circ}\text{C}$

(b) Based on actual Minimum Temperature (for Plains only)

Cold Wave: When Minimum Temperature is $\leq 4.0^{\circ}\text{C}$

Severe Cold Wave: When Minimum Temperature is $\leq 2.0^{\circ}\text{C}$

(c) For Coastal Stations

When Minimum Temperature departure is $\leq -4.5^{\circ}\text{C}$ & actual Minimum Temperature is $\leq 15^{\circ}\text{C}$

Cold Day

When minimum temperature of a station $\leq 10^{\circ}\text{C}$ for plains and $\leq 0^{\circ}\text{C}$ for hilly regions

Based on departure

Cold Day: Maximum Temperature Departure from normal -4.5°C to -6.4°C .

Severe Cold Day: Maximum Temperature Departure from normal $\leq -6.5^{\circ}\text{C}$

Fog

Phenomenon of small droplets suspended in air and the horizontal visibility $< 1\text{km}$

Moderate Fog: When the visibility between 500-200 metres

Dense Fog: when the visibility between 50- 200 metres

Very Dense Fog: when the visibility < 50 metres

Thunderstorm

Sudden electrical discharges manifested by a flash of light (Lightning) and a sharp rumbling sound (thunder)

Dust/Sand Storm

An ensemble of particles of dust or sand energetically lifted to great heights by a strong and turbulent wind.

Frost

Ice deposits on ground

Air temperature $\leq 4^{\circ}\text{C}$ (over Plains)

Squall

A strong wind that rises suddenly, lasts for atleast 1 minute.

Moderate: Wind speed 52-61 kmph

Severe: Wind speed 62-67 kmph

Very Severe: Wind speed > 67 kmph

Sea State

Effect of various waves in the sea over specific area

Rough to very rough: Wind speed 41-62 kmph (22-33 knots) & Wave height 2.5-6 metre

High to very high: Wind speed 63-117 kmph (34-63 knots) & Wave height 6-14 metre

Phenomenal: Wind speed > 117 kmph (> 63 knots) & Wave height > 14 metre

Cyclone

Cyclonic Storm: Wind speed 62-87 kmph (34-47 knots)

Severe Cyclonic Storm: Wind speed 88-117 kmph (48-63 knots)

Very Severe Cyclonic Storm: Wind speed 118-165 kmph (64 - 89 knots)

Extremely Severe Cyclonic Storm: Wind speed 166-220 kmph (90 -119 knots)

Super Cyclone Storm: Wind speed > 220 kmph (> 119 knots)

* Red colour warning does not mean "Red Alert", Red colour warning means "Take Action".

Forecast and Warning for any day is valid from 0830 hours IST of day till 0830 hours IST of next day.

For more details, kindly visit <https://mausam.imd.gov.in> or contact: 011-2434-4599

(Service to the Nation since 1875)

Hot and Humid: When maximum temperatures remain 3°C above normal along with the above normal relative humidity.